



**Crown Infrastructure
Delivery**

October 2024

Parakiore Recreation and Sport Centre



Community courts flooring

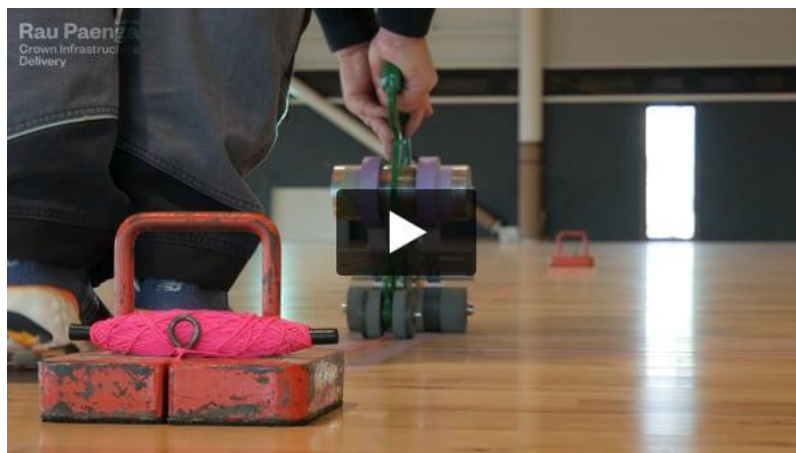
Installation of the community courts is now complete, with 3500-metres of lines marked, coated and the edges covered for protection until opening.

The facility's community courts space includes six full-size basketball courts, six netball courts, 12 volleyball courts, six badminton courts, and three international futsal courts. Notably, the futsal courts can also accommodate handball, korfbal, and floorball.

The installation team end up going over the lines eight times, marking out, running tape, cutting out the courts, rolling, cleaning, clear coating, painting and finally removing the tape. Many days installers can end up walking about 20km.

Commissioning of the scoreboards, retractable dividing nets and retractable basketball hoops will be carried out next year.

See how the floor is being constructed in the video below.

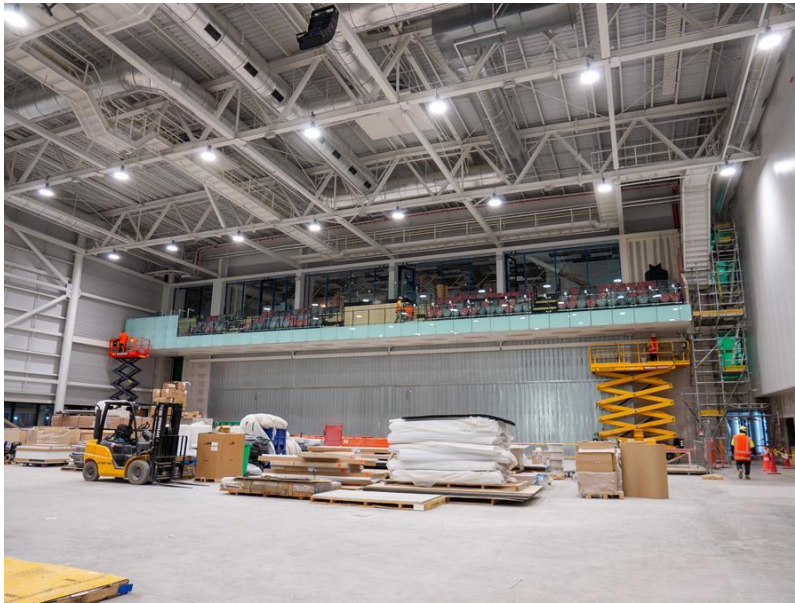




Show court

The flooring installers are currently constructing the floor in the 700m² fitness centre and the MOVE (Circo arts) studio, before repeating the sprung wooden floor installation process in the three-court show court space. A recent addition to this space is the Canterbury-coloured bleachers on the corporate/media mezzanine.





Pools

Construction of the five-metre-deep dive well and coating of the competition dive tower is now underway. This will be followed by the installation of the handrails on the platforms and staircases.

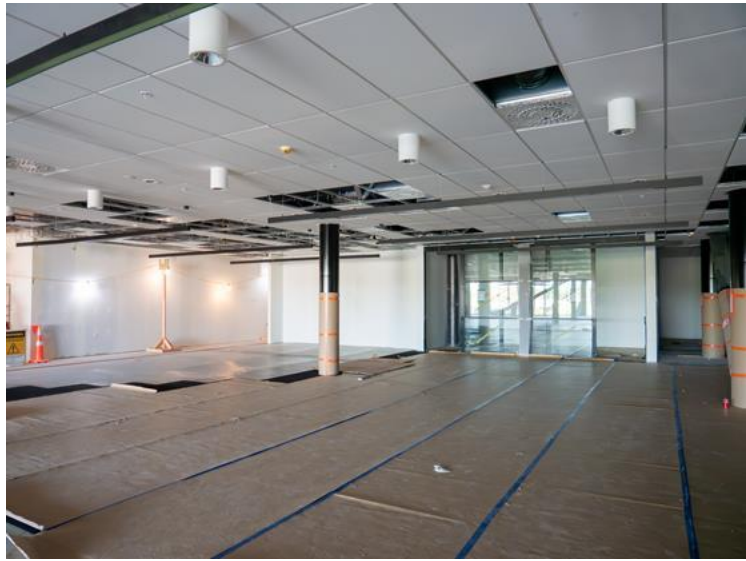
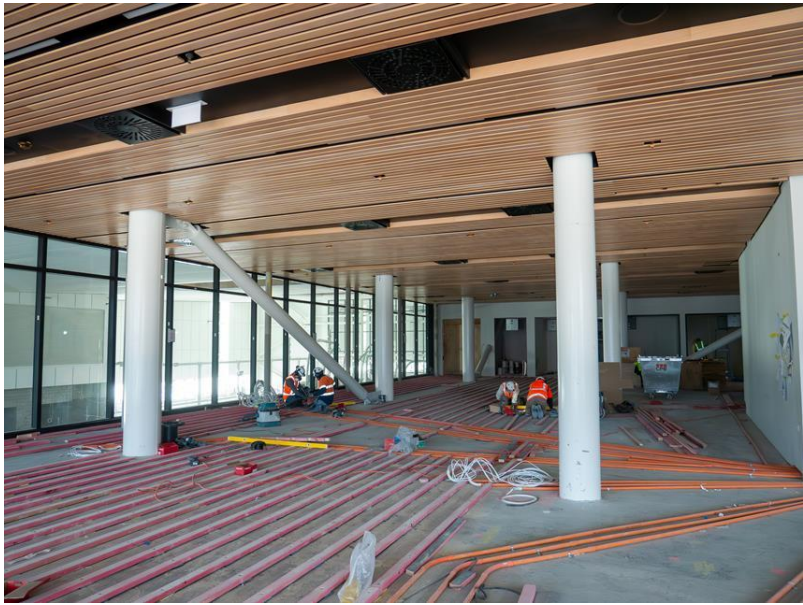
Once the dive well has been mostly assembled, there will be enough clear space in the 50m pool to assemble and lift into place the moveable boom.

Next month a specialist from the Netherlands will be onsite to begin the installation of the moveable floor at the northern end of the 50m pool. This is a floating floor attached to cables and can be set at any depth from zero to two metres.

The underfloor heating around the 1,500m² leisure water space and competition pools is also

being laid and covered with concrete, ahead of tiling.





Finished surfaces

Ceilings, glazing and floor coverings are being installed in the Sport Canterbury and High Performance Sport New Zealand office spaces on the first and second floors of the facility.

In the central entrance and reception area, ceiling installation is underway, along with significant amounts of tiling for the corridors and changing areas. This work will continue throughout the remainder of the build as each of Parakiore's 300+ spaces becomes available for finishing.



Outside

Outside, work continues to plant the almost 20,000 plants and trees that will surround Parakiore.

The majority of the paths and accessways that lead up to the northern entrance of the facility have now been poured, with contractors currently working on constructing the paths and garden beds on the east and western sides of the building.



Crown Infrastructure Delivery

[Expertise](#)

[Projects](#)

[Careers](#)

[Preferences](#) | [Unsubscribe](#)